



**High Resolution  
Impedance  
Technology**

***User Guide:  
Installing Spectrometer  
Driver***

## ***Important!!***

- *Please make sure the Spectrometer is powered OFF.*
- *Install the INPHAZE Control Panel software first, before making the USB connection to the Spectrometer.*
- *Switch the Spectrometer's power on LAST.*

### **Instructions:**

**1.**

Install the INPHAZE Control Panel software by running “setup.exe” located in the installation CD, and follow the on screen prompts.

**2.**

While the Spectrometer remains switched OFF, connect the supplied USB cable from the Spectrometer to a free USB 2.0 port of your computer.

**3.**

Turn the Spectrometer's power ON, and your computer should display the “Found New Hardware Wizard”. Please follow the 6 images below when going through the wizard.



Figure 1: Select “No” and then “Next”

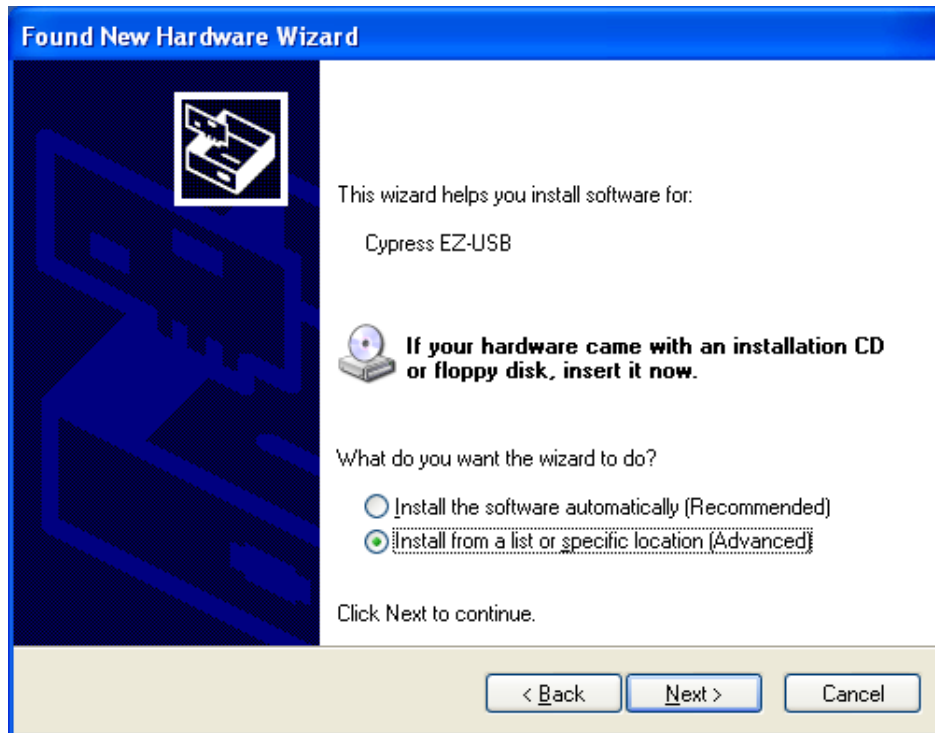


Figure 2: Select “Advanced” and then “Next”



Figure 3: Browse to “C:\Program Files\INPHAZE\USB Drivers” and then “OK”

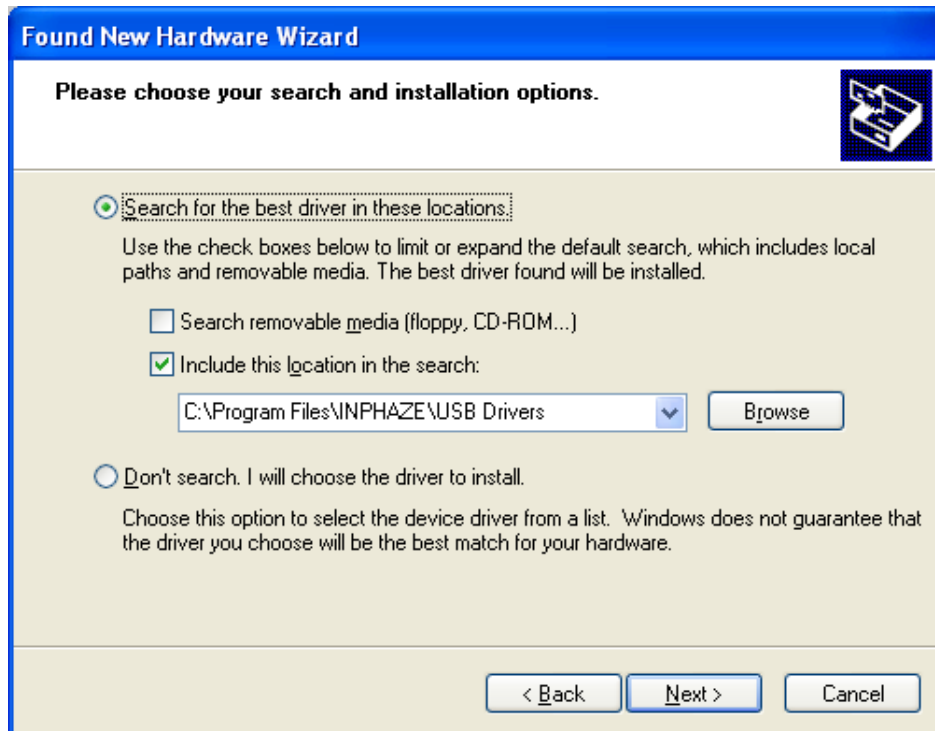


Figure 4: Select “Search...” and tick “Include this location...”





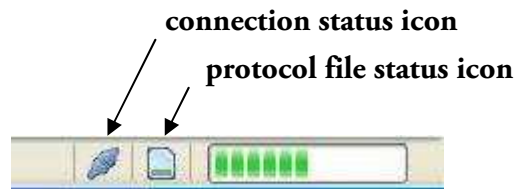
Figure 5: Click “Continue Anyway”



Figure 6: Click “Finish”

Every time the Spectrometer is plugged into a new USB 2.0 port of the computer, the “Found New Hardware Wizard” should pop up, as shown in Figure 1. Simply repeat the procedures described in Figures 1 to 6 to point Microsoft Windows® to the appropriate driver.

Once the driver has been successfully installed, the title bar of the INPHAZE Control Panel program window should say “.... Spectrometer Connected”, and the connection status icon should show  instead of .



Bottom-right corner of the INPHAZE Control Panel program window